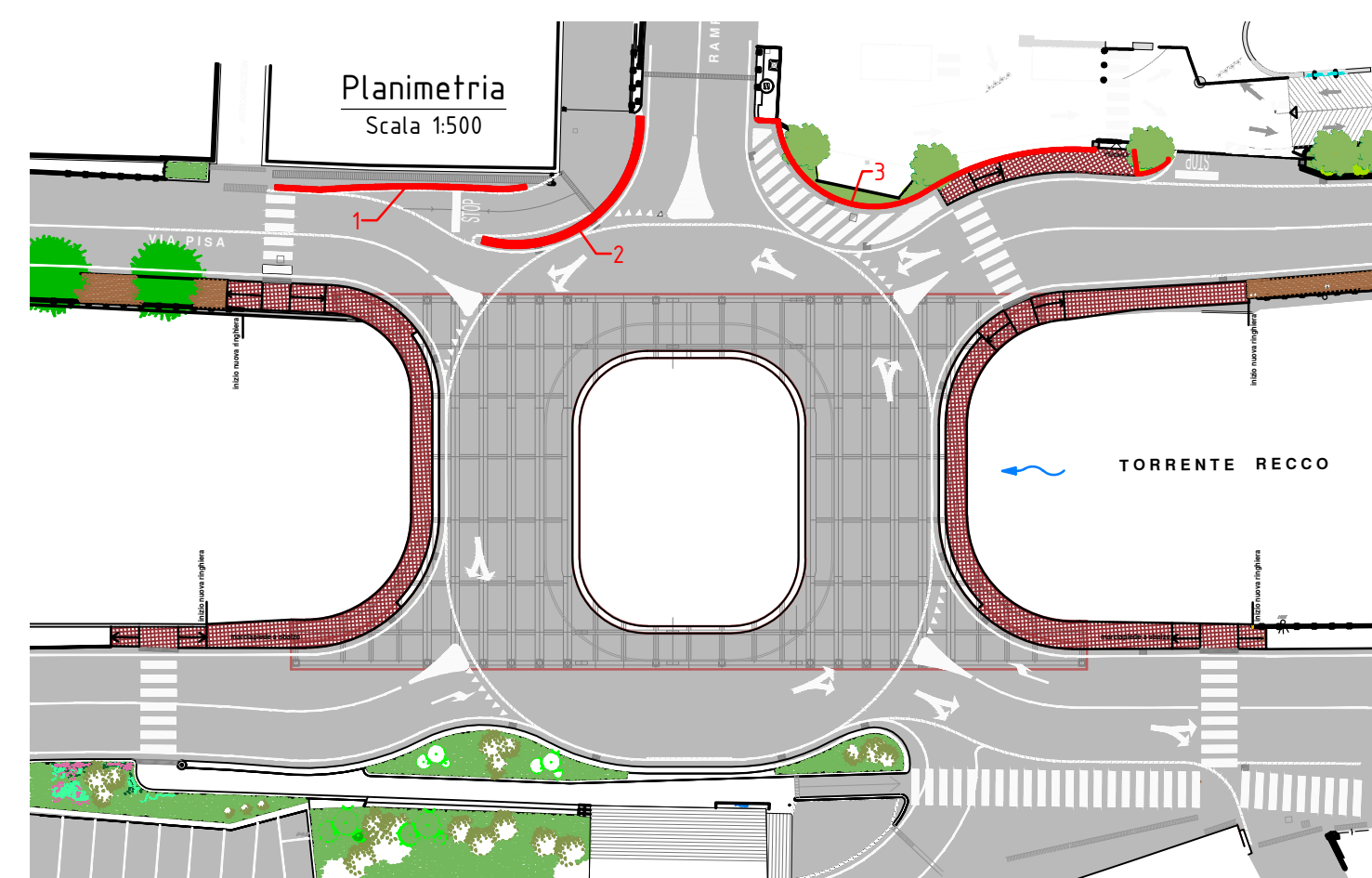
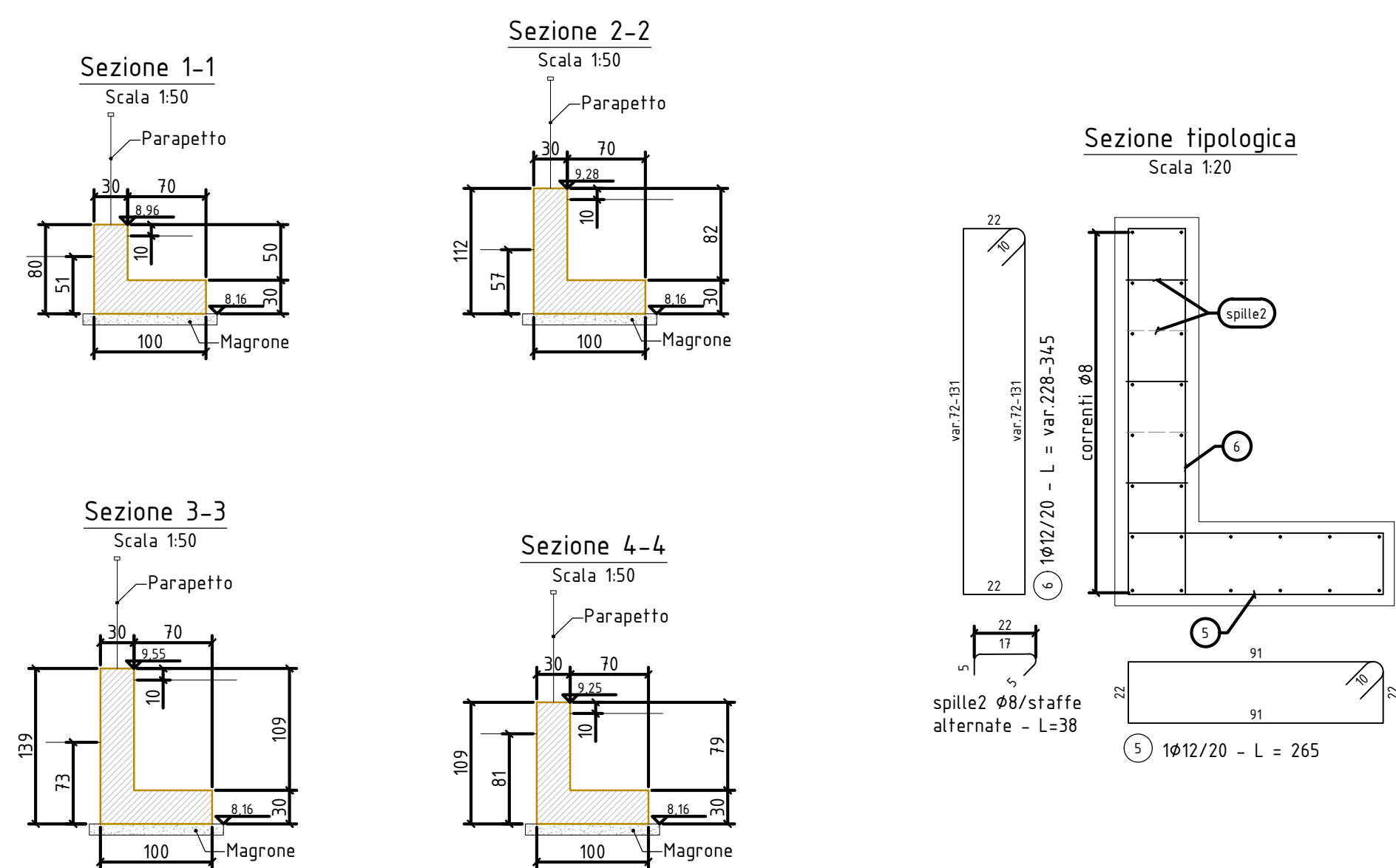
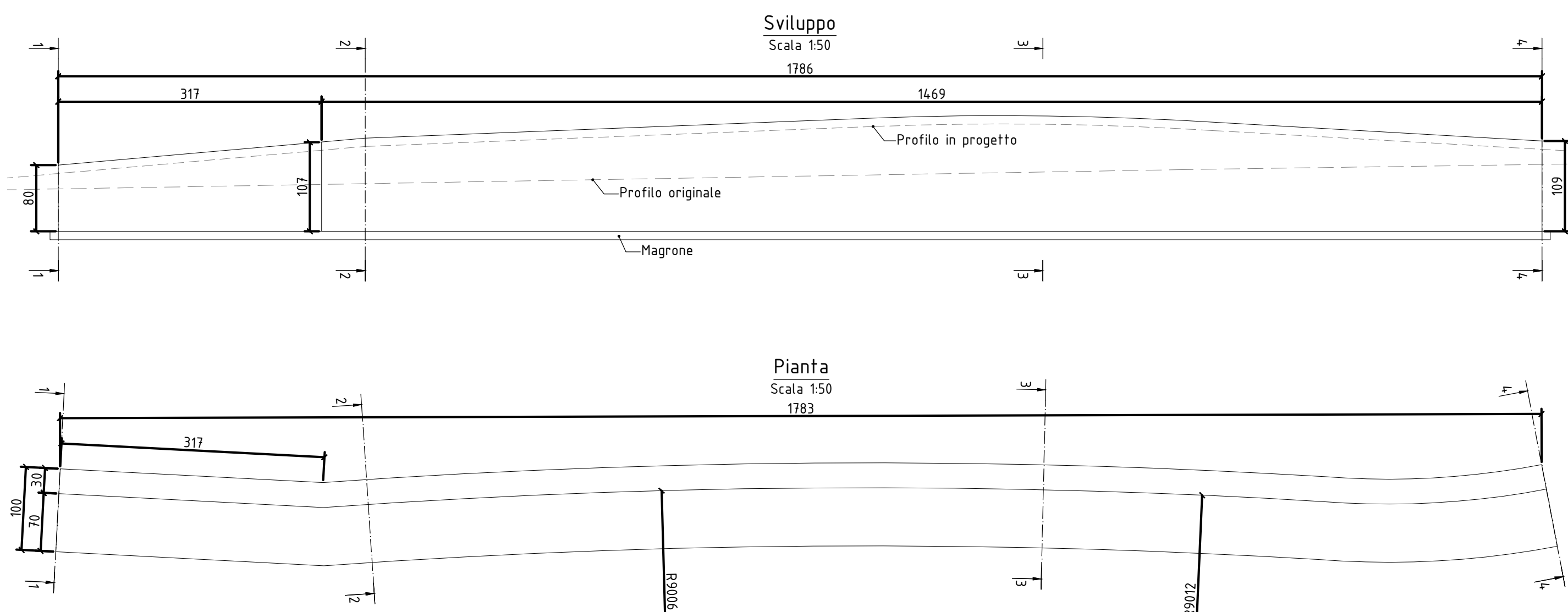
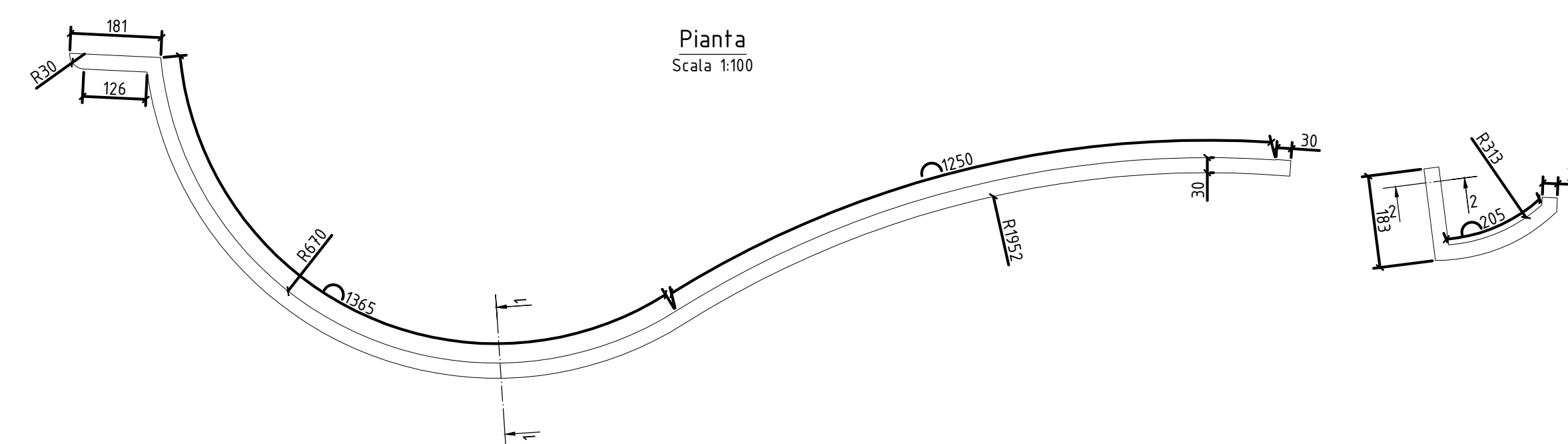
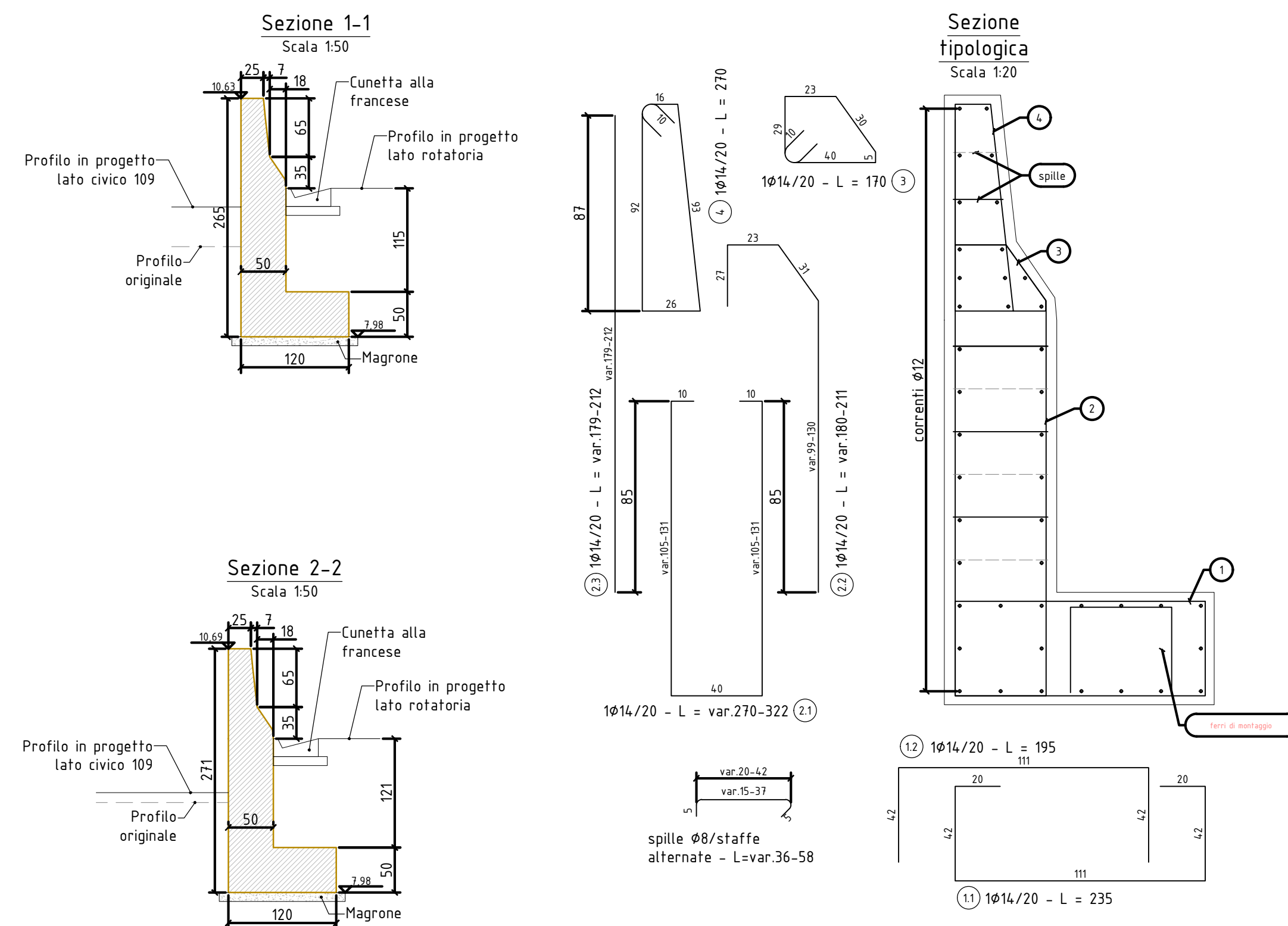
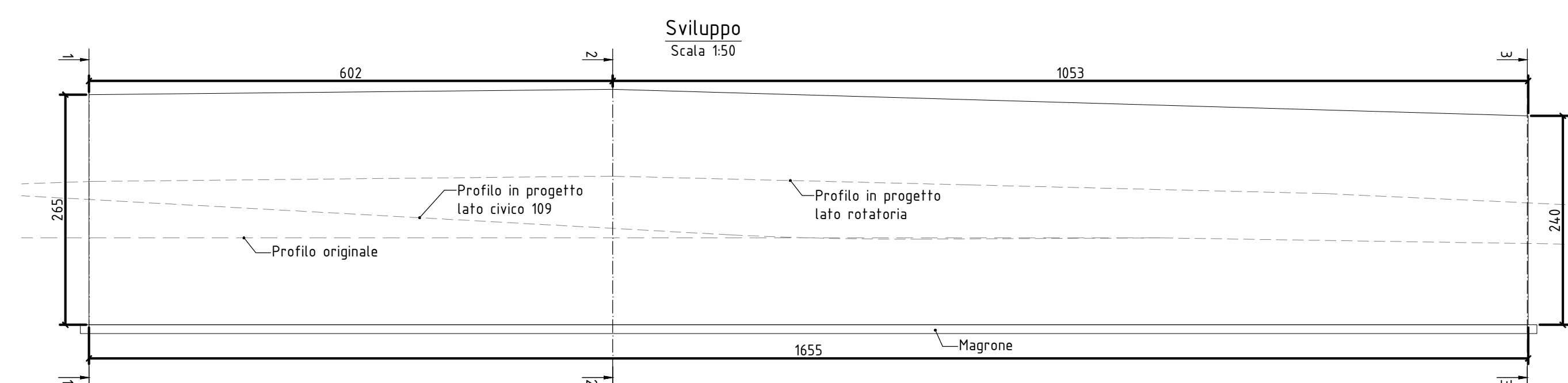


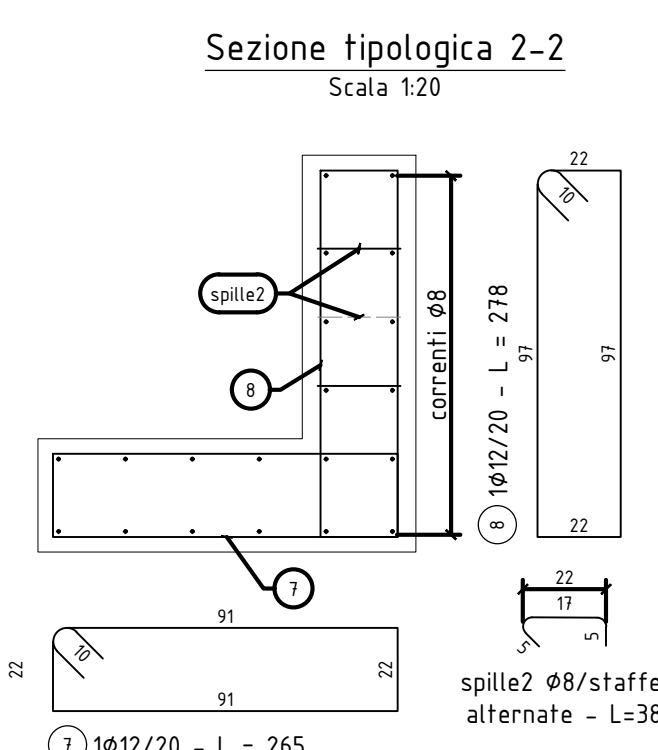
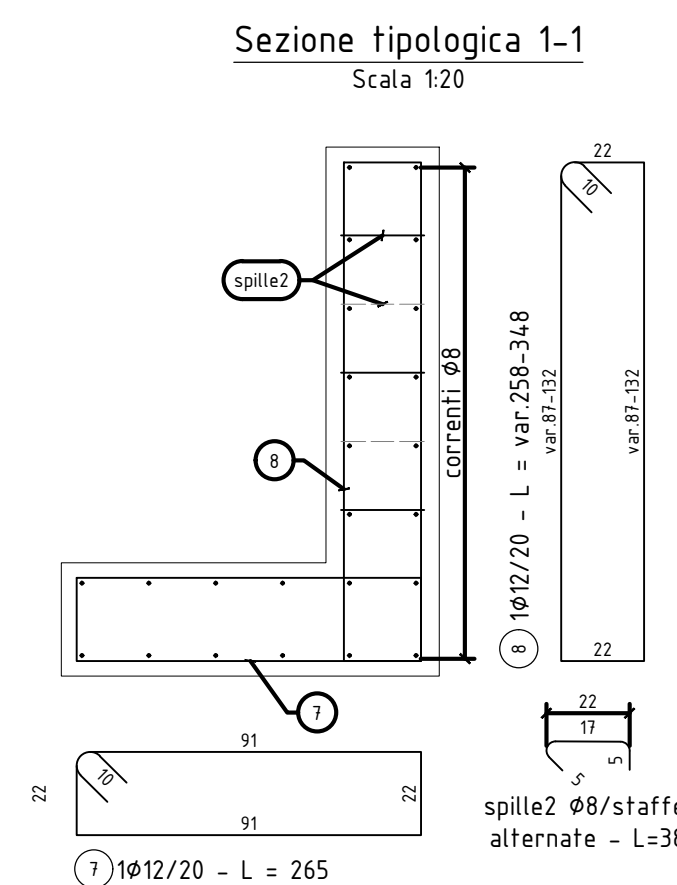
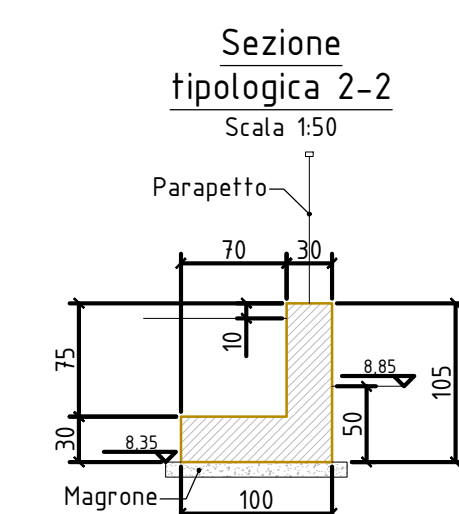
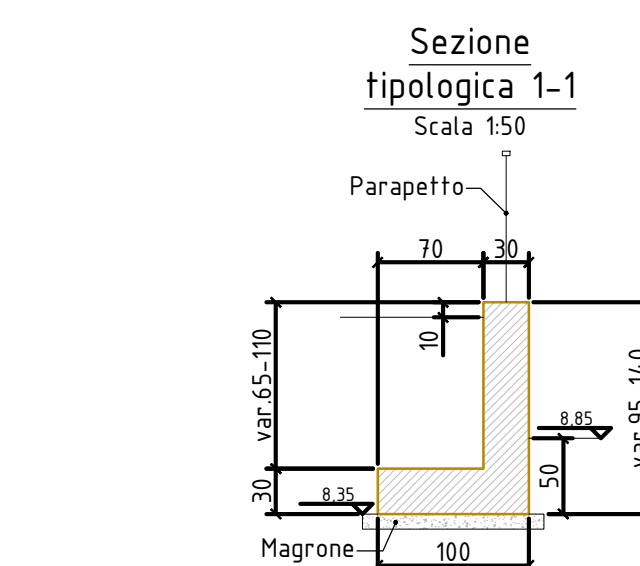
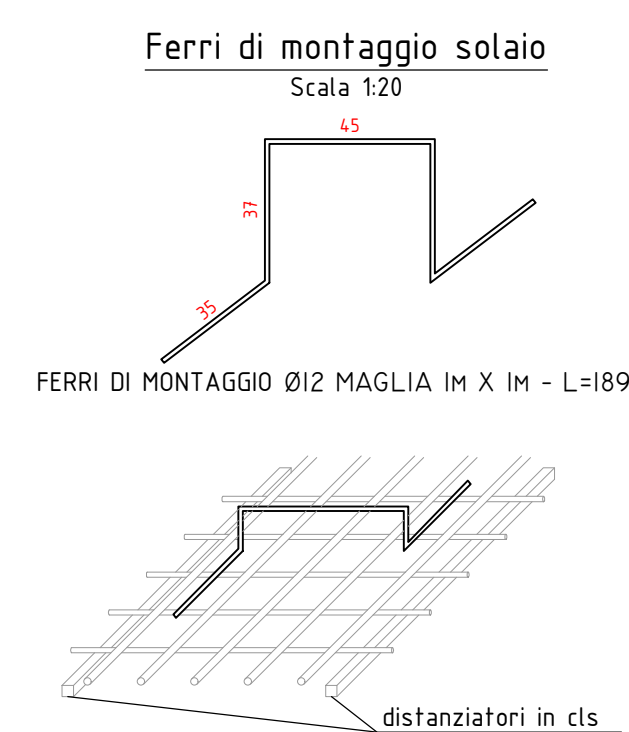
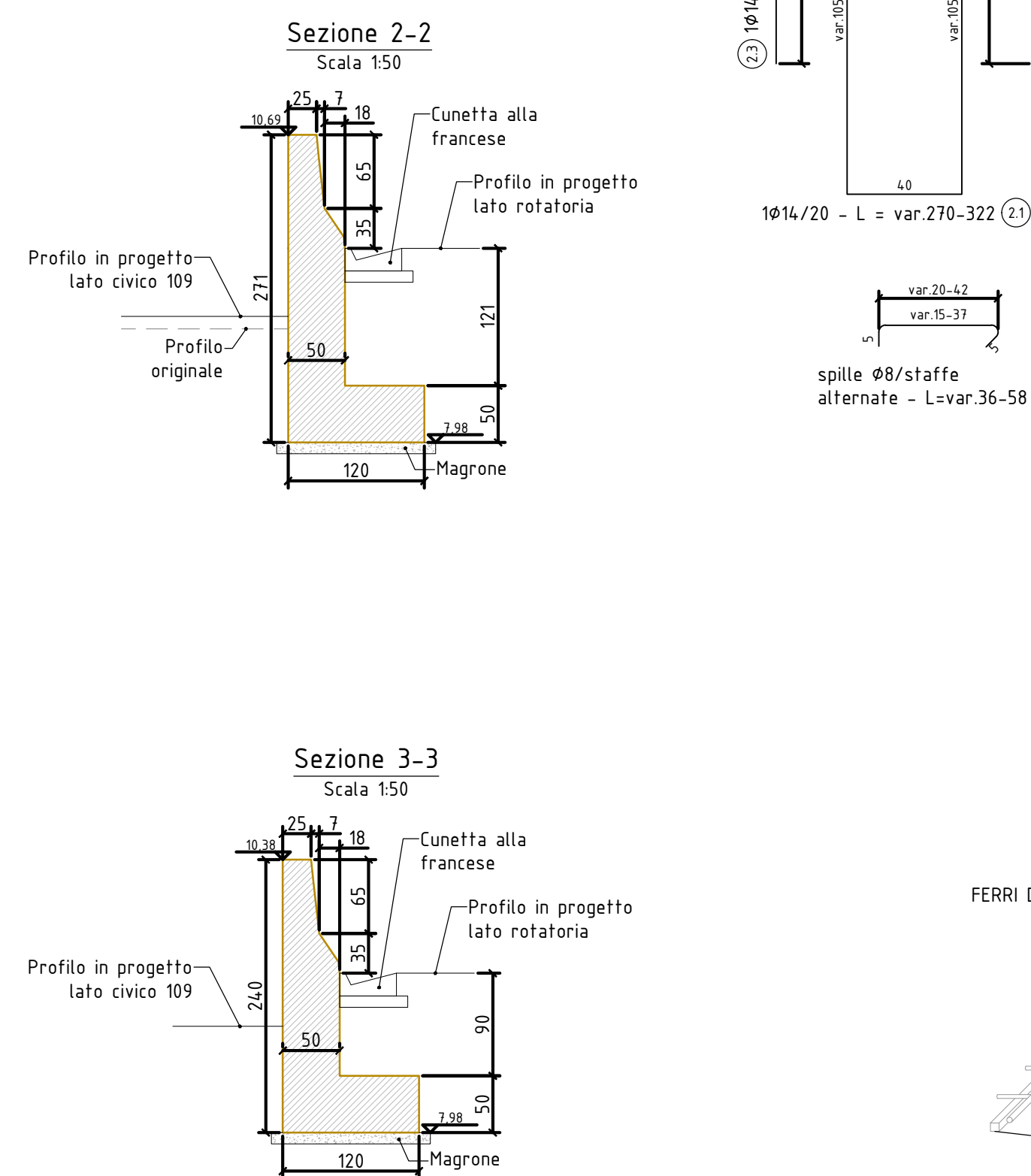
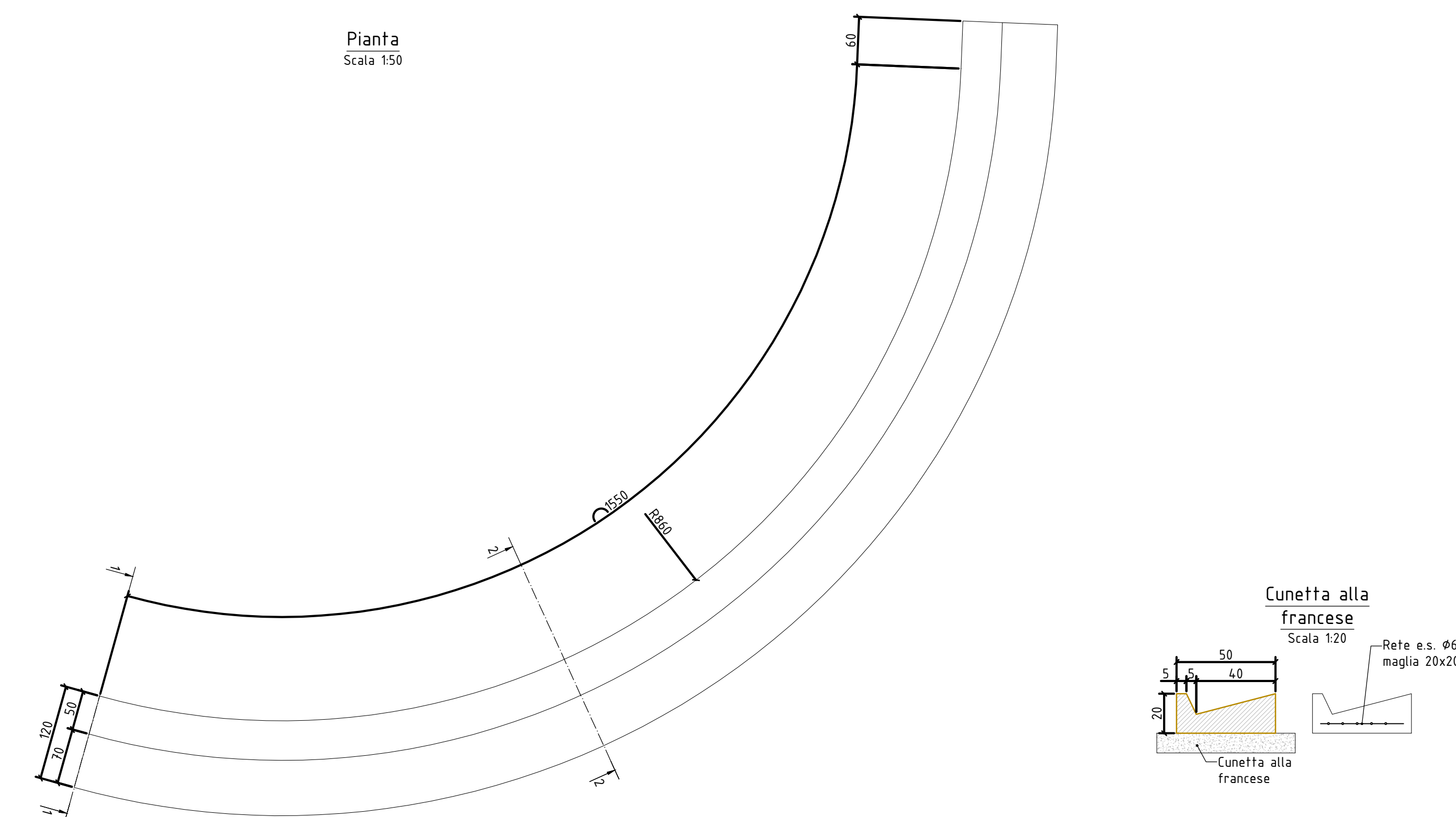
1. Cordolo civico 109



2. Muro civico 109



### 3. Muro



## SOSTITUZIONE DEL PONTE DI RACCORDO AL CASELLO AUTOSTRADALE TRA VIA PISA, VIA DEI FIESCHI E VIA ROMA

**Committente:****COMUNE DI RECCO**

Progettista:



ing, P. Maestrelli

**Responsabile della sicurezza in fase di progettazione**



## PROGETTO ESECUTIVO

PR2220_PE_D075_A.DWG		CUMI FILE		CODICE COMMESSA				TIPO		NUMERO TAVOLA				RE	
		P		R		2		2		0		P		E	
		D		0		7		5		A					
SCALA		TITOLO TAVOLA													
varie		STRUTTURE OPERE CIVILI E FONDAZIONI													
DATA															
Luglio 2025		Carpenteria ed armatura muri civico 109													